

# Setting

**Valcia**  
Circa 3059 O.S.

30 MILES

Lisaris Ocean

# SETTING IS GENRE.



# STORIES ARE ABOUT PEOPLE. ALWAYS.

Specifically, they're about  
how people  
**handle catastrophe.**



Not just a place where things will happen ...



...But a place where things which **force the main character to make hard choices** will happen.

# Setting is:

... a place where things can go wrong

... the best place for the main character to confront personal weaknesses

... full of people, animals, plants and inanimate objects—90% of which the reader will never see.

# SETTING IMPOSES LIMITATIONS



# Setting determines mood and tone



**Craft your  
setting so that  
only your hero  
can solve the  
problem.**



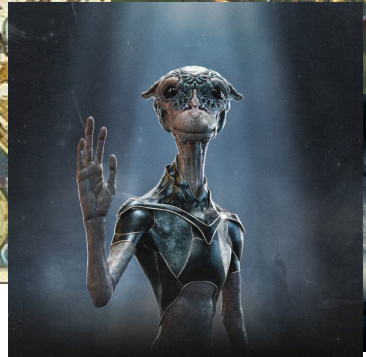
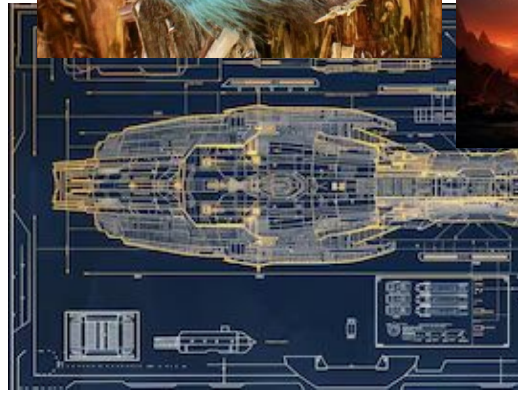
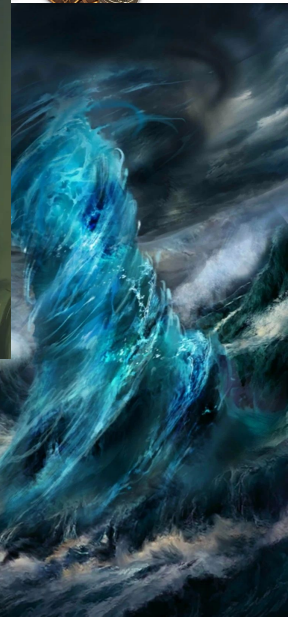
# Research is for everyone.



**Memoir,  
Biography and  
Nonfiction  
must also have  
detailed  
settings.**



# Fantasy and Sci-Fi build from the ground up.



- 1. Choose the Setting Development Sheet for your genre.**
- 2. Fill out the questionnaire on the sheet in detail.**
- 3. Over the next couple of weeks, start thinking of characters and story ideas that would work with your setting.**